

# Shall I Cross the Bridge?

November 20, 2020

From the Musical Lapopessa

Words & Music by Allen M. Dion & Paul N. Dion

C

I find it cur - i - ous and ve - ry un - like - ly,  
*Pacelli*

3 F G7

find - ing our - selves at this cross - ing.

5 C

Who could im - ag - ine a pro - mi - sing pro - po - sal?

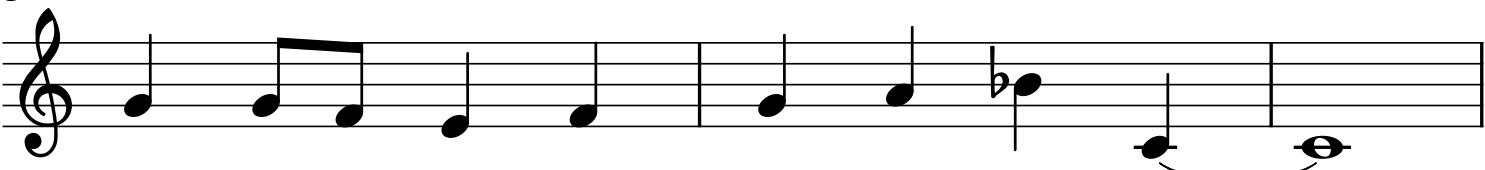
7 A7

One ne - ver spo - ken of be - fore. And

9 Dm G7


now we are faced with a del - i - cate choice.

11 C




Do we ar - range this brave new cross - ing?

14 F



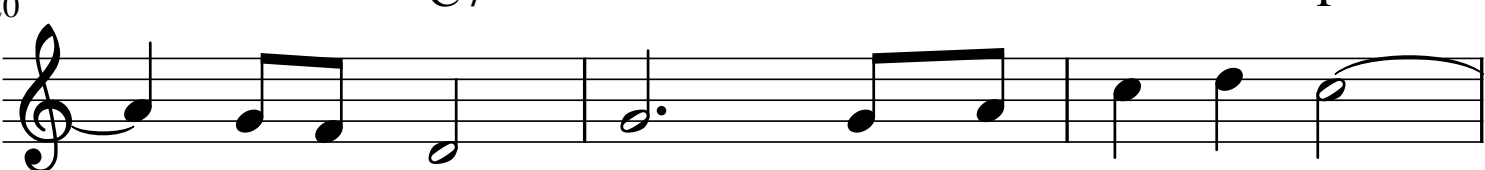
Shall I cross the bridge? Shall I take the step?  
*Pascalina*

17 B♭ F



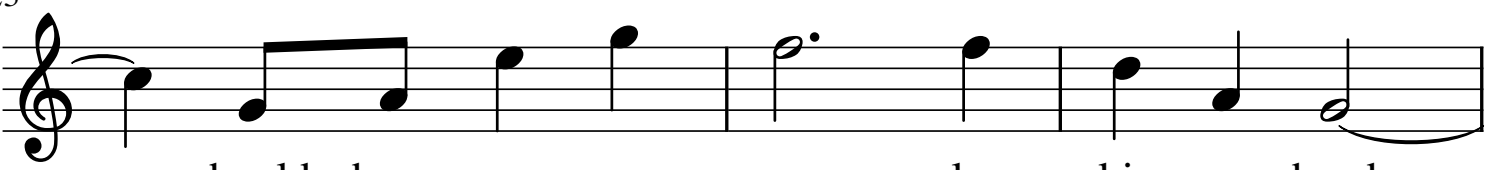
If I make the move will I have re - gret

20 C7 F




in the morn - ing? Those that take the leap  
*Both*

23 Gm B♭m



should have o - pen eyes, clear skies a - head

26 F



with no clouds in sight. Now our paths col - lide

29 B $\flat$  F

as we roll the dice. But will we sur-vive?

Detailed description: This block contains the first line of music, measures 29 to 31. It is written on a single treble clef staff. Measure 29 starts with a quarter note G4, followed by eighth notes A4, B4, and C5. Measure 30 begins with a dotted half note B $\flat$ 4. Measure 31 contains eighth notes D5, E5, and F5. Chords B $\flat$  and F are indicated above the staff.

32 B $\flat$

When I look at you. When you look at  
*Pacelli* *Pascalina*

Detailed description: This block contains the second line of music, measures 32 to 34. It is written on a single treble clef staff. Measure 32 starts with a quarter note G4, followed by eighth notes A4, B4, and C5. Measure 33 begins with a dotted half note B $\flat$ 4. Measure 34 contains eighth notes D5, E5, and F5. Chord B $\flat$  is indicated above the staff.

35 B $\flat$  F

Dm

me. I on - ly know I want you near to me.

*Both*

Detailed description: This block contains the third line of music, measures 35 to 38. It is written on a single treble clef staff. Measure 35 starts with a quarter note G4, followed by eighth notes A4, B4, and C5. Measure 36 begins with a dotted half note B $\flat$ 4. Measure 37 contains eighth notes D5, E5, and F5. Measure 38 contains eighth notes G5, A5, and B5. Chords Dm, B $\flat$ , and F are indicated above the staff.

39 Dm F

Share my space and my heart, al -

Detailed description: This block contains the fourth line of music, measures 39 to 41. It is written on a single treble clef staff. Measure 39 starts with a quarter note G4, followed by eighth notes A4, B4, and C5. Measure 40 begins with a dotted half note B $\flat$ 4. Measure 41 contains eighth notes D5, E5, and F5. Chords Dm and F are indicated above the staff.

42 B $\flat$

though this jour - ney's hard to chart,

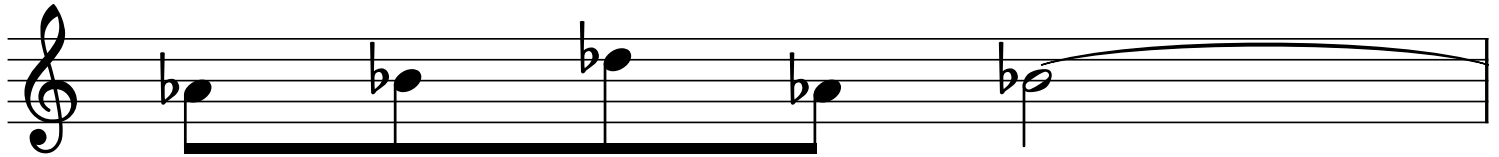
Detailed description: This block contains the fifth line of music, measures 42 to 43. It is written on a single treble clef staff. Measure 42 starts with a quarter note G4, followed by eighth notes A4, B4, and C5. Measure 43 begins with a dotted half note B $\flat$ 4. Chord B $\flat$  is indicated above the staff.

44 F $\sharp$

we will ne - ver be a - lone or a - part.

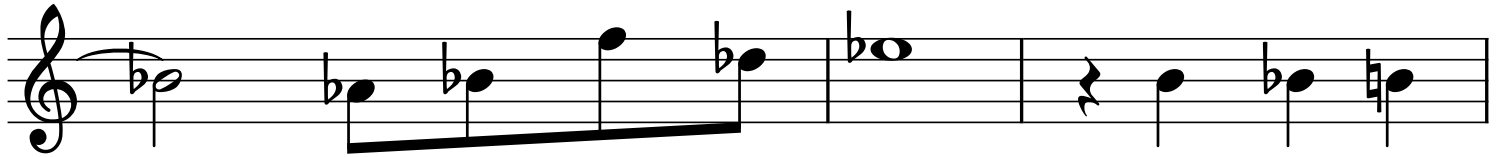
Detailed description: This block contains the sixth line of music, measures 44 to 46. It is written on a single treble clef staff. Measure 44 starts with a quarter note G4, followed by eighth notes A4, B4, and C5. Measure 45 begins with a dotted half note B $\flat$ 4. Measure 46 contains eighth notes D5, E5, and F5. Chord F $\sharp$  is indicated above the staff.

47



We should cross this bridge

48



with our heads held high. There's no re -

B Abm7

51



turn in the mo - rn - ing!

Db7

F#