

Kesselring's Threat

from the Musical Lapopessa

Words & Music by Allen M. Dion and Paul N. Dion

C G

Are you al - right? Yes, a most un - sett - ling
Pacelli *Pascalina*

4 C Am Ab

night Your ex - cel - len - cy we are at this mo - ment de -
Kesselring

9 Am Gm

stroy - ing the Bol - she - viks and re - mov - ing this com - mu - nist

13 A Dm C

threat. Your house will now be safe. I should
Pacelli

17 G C Am

hope so but it seems a lit - tle late, who are you? I
Kes - sel - Kesselring

22

A \flat



ring I bring greet-ings from the Fur-her. I

25

Gm

A

Dm



speak on his be - half, I am his chief of staff.

30

E \flat m

F

E \flat m



I am here to de - mand that you fol-low our

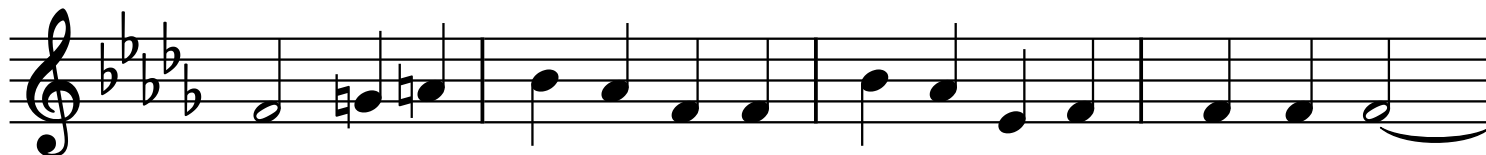
34

F

B \flat m

A \flat m

F



course as we glor-i - fy and pur-i - fy and you'd be wise

38

B \flat m E \flat m



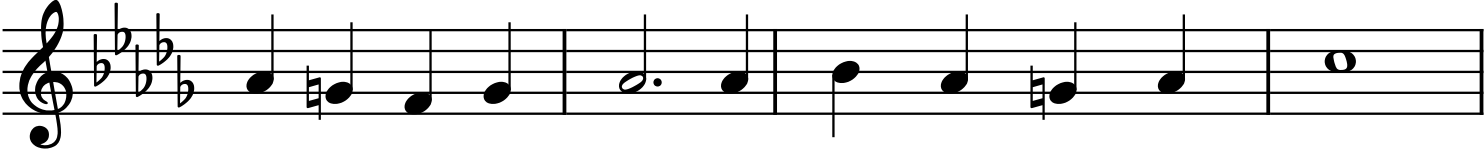
to give your sup - port Hit-ler is a man for all

42 B♭m E♭m



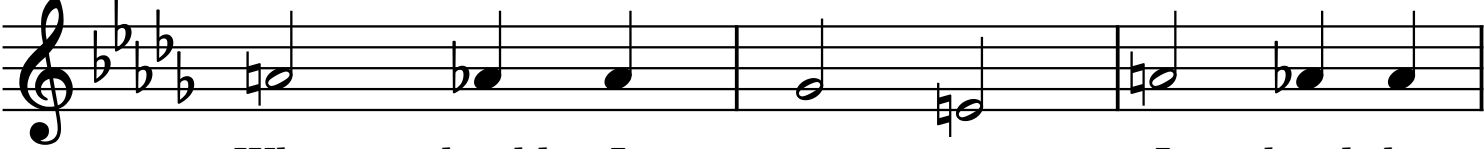
peo - ple on this you have my word.

46 A♭ B♭ C



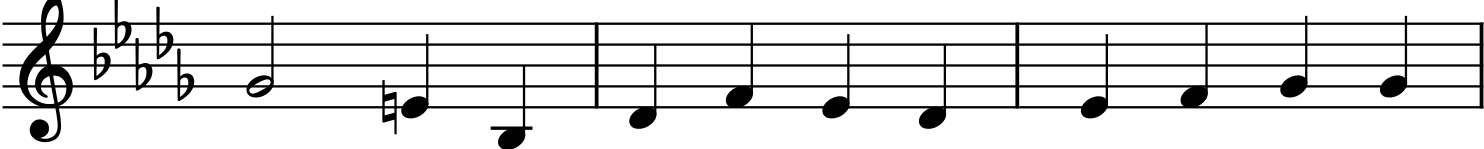
That is so ab - surd can't just take his word!
Pascalina

50 A



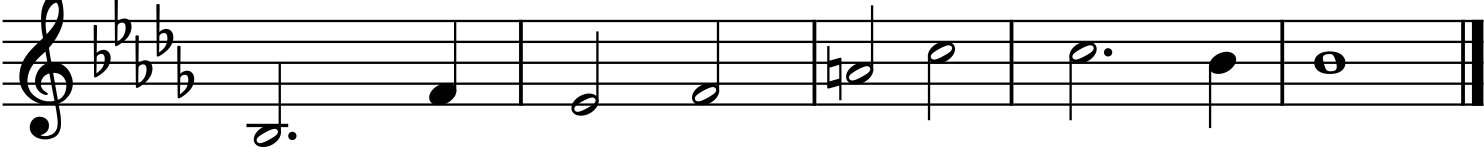
Why should I trust you I hard-ly
Pacelli

53 B♭m E♭m



know you! To - ge - ther we will make Ger - man - y
Kesselring

56 B♭m F Cm B♭



strong the Fuh - rer is a Cath - o - lic!