

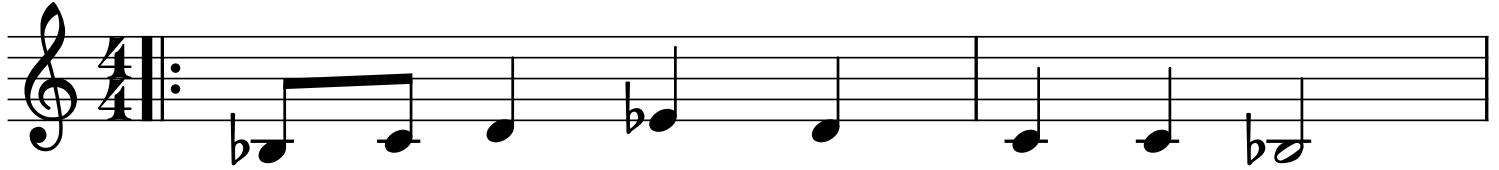
A Woman in the Conclave

November 24, 2020

From the Musical Lapopessa

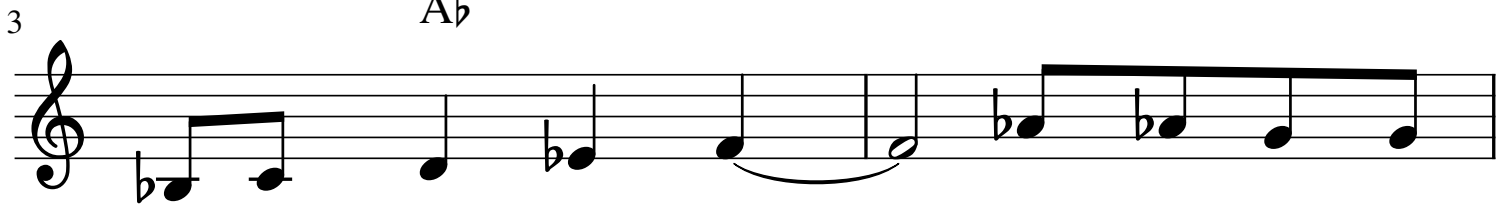
Words and Music by Allen M. Dion and Paul N. Dion

B \flat



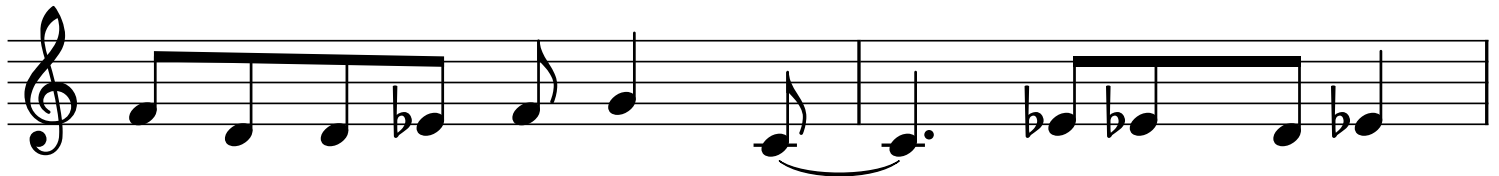
The com - ple - tion of the con - clave
As the con - clave starts it's mis - sion

A \flat



re-quires hous - ing and ac - com - mo - da -
sol - emn hymns are heard through - out the chamb -

Cm



tions as the car - pen - ters build six - ty two en -
ers ho - ly pray - ers be - gin with match - es

F

Cm

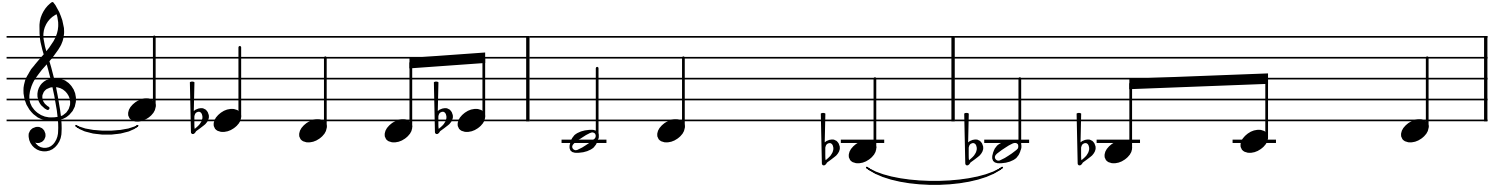
F



clo - sures for the Car - di - nals con - tem - pla - tion.
a candle for the Car - di - nals con - tem - pla - tion.

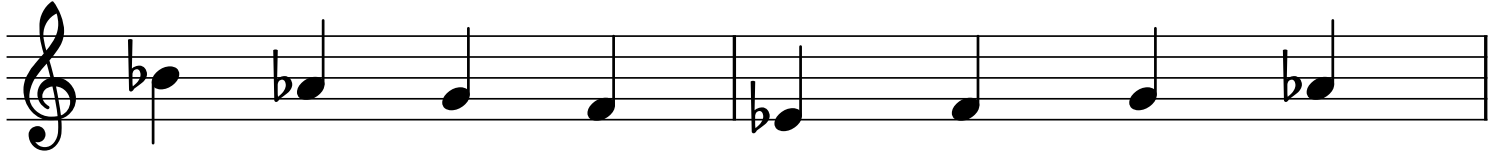
9

Cm

B \flat 

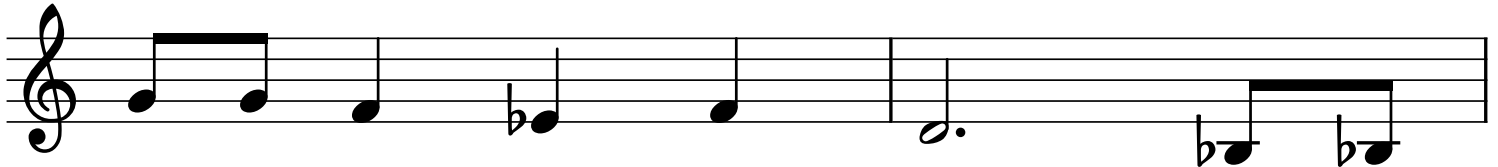
For they will e - lect a pope. There are few
And wax will seal their choice. In the corn -

12

A \flat 

with - in the con - clave walls and some
er lies a wait - ing stove to burn

14

B \flat 

as - sist - ance is need - ed. Gov - en -
a - way the Cardinal's votes. Black smoke

16

F

A \flat 

ors, doc - tors, nurs - es and as - sist - ants, guards
means no con - sen - sus has been rea - ched white

18

B \flat E \flat 

ser - vants, cooks, and clean - ers. And some -
smoke de - cries a pope. A - maz -

20 B \flat Cm

thing new, a nun! Some-thing
ing to the nun! Some-thing

22 B \flat Cm

that's ne - ver been done be - fore. Ne - ver
re - peat - ed each time they meet. As done

24 F B \flat

be - fore ne - ver a - gain. The sis -
be - fore will be a - gain. When thou -

26 A \flat

tine chap-el was locked down for the dur-a-tion as shrouds
sands push the lim - its of St. Pe-ters, most

28 F A \flat

veil the pass-age of morn - ing light. The at -
can be heard shout - ing Pa - cel-li's name. Their voi -

30 D \flat

mo-sphere turns grey with an - ti - ci - pa - tion
ces all con - vey peo - ples ad - mir - a - tion.

32 C A \flat

as twi-light re-plac - es night - time and dusk
The faith-ful be-come the watch - ful for their

35 C F

de - nies the day light. And up
new Pope to as cend. Be - hold

38 Dm

un - til this ve - ry mo - ment on -
the word, and the man him - self Pa -

40 B \flat

- ly men had been ad - mitt - ed
- cel - li meets their ap - prov - al

42

C7



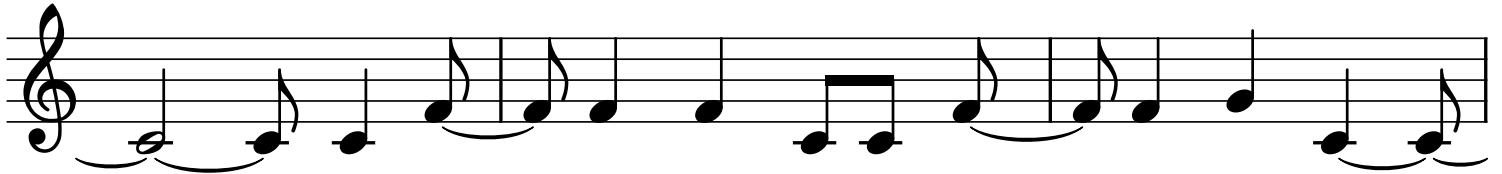
but now a long tra-di - tion has been lost
al - though he brings some bag - gage a long

45

F

Dm

Gm



and kept sec - ret by the win - dows tint - ed.
we ra - ti - fy the peo - ple's se - lect - ion.

48

C

F

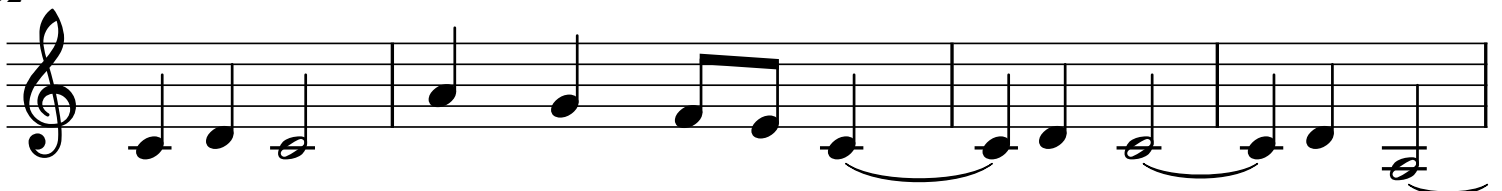


A wo-man in the con-clave, it's nev-er been

52

B \flat

F

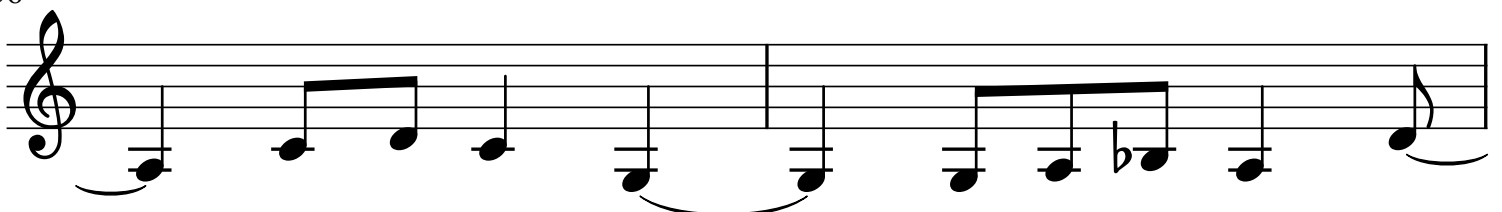


done be-fore, the stunned Car-di-nals can all a - gree.

56

Gm

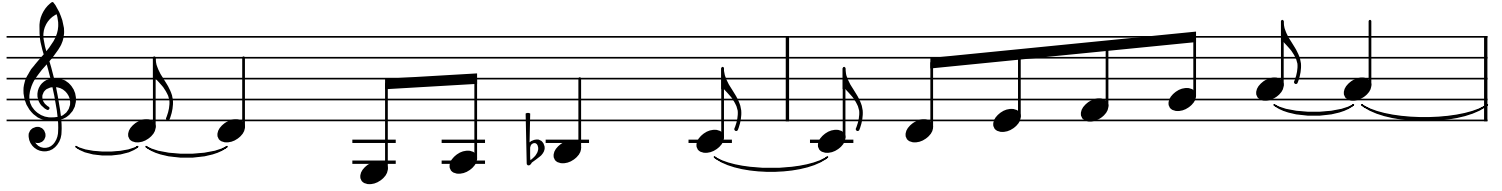
Dm



But their fo - cus has been di - vert - ed

58

Gm



As Pa cel - li for-mal - ly ac-cepts

60

C

D



their call:

I won't ac - cept,

64

Bb

Bbm

F



un - less you cross

this bridge

with me.